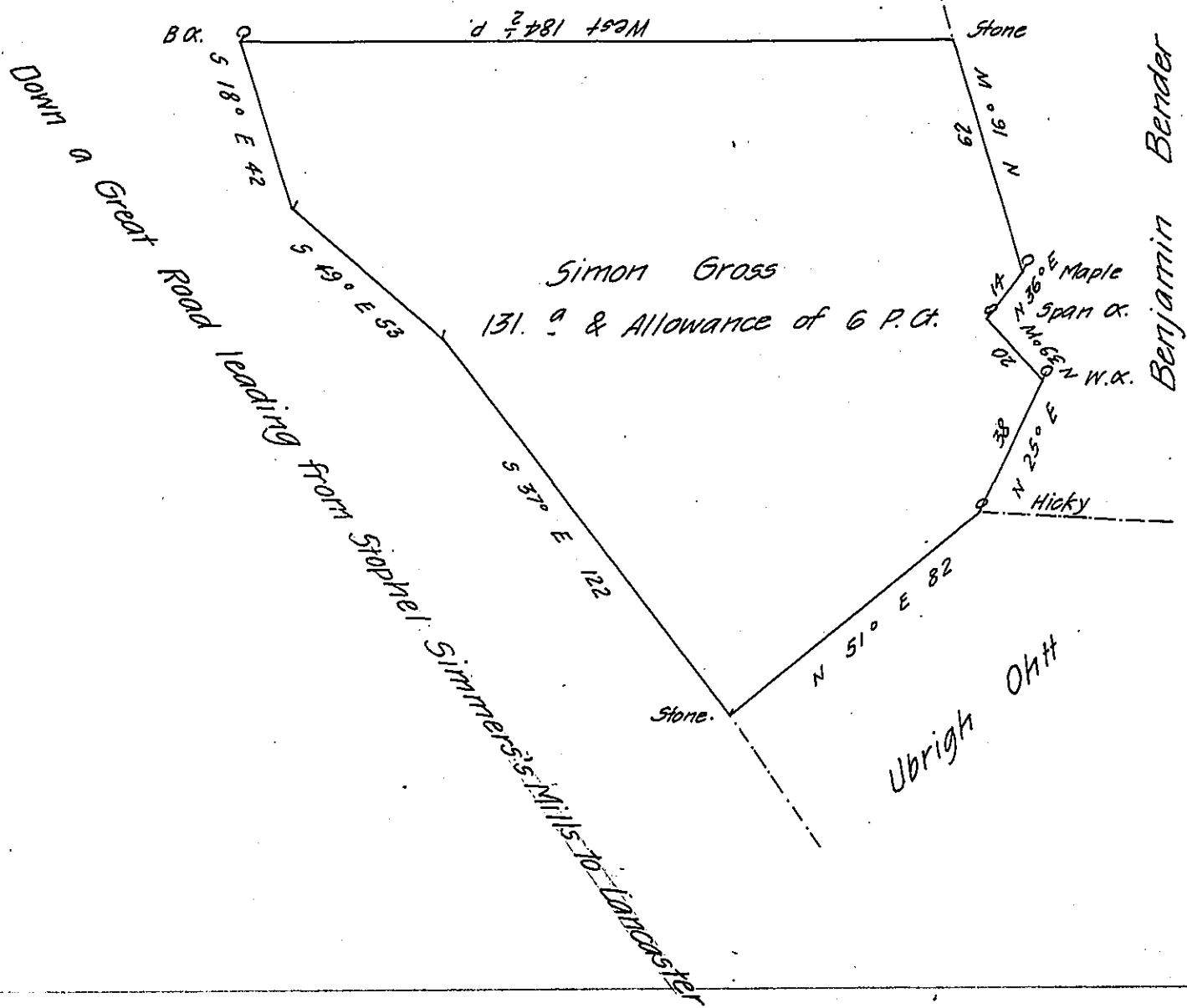


Nathaniel Giles



Survey'd to Simon Gross on the 20th December 1765 the above
 discribed tract of one Hundred & thirty one acres & the Usual Allow-
 ance of Six P. Ct. Situate in Rapho Town P. Lancaster County By Appli-
 cation of the 8th day of October 1765 N^o 1033.

P.—

To In^o Lukens Esq^r
 Sur^r Gen^l

Bartrem Galbraith D.S.

IN TESTIMONY that the above is a copy of the original remaining on file in
 the Department of Internal Affairs of Pennsylvania, made
 conformably to an Act of Assembly approved the 16th day of
 February, 1833, I have hereunto set my Hand and caused
 the Seal of said Department to be affixed at Harrisburg,
 this ninth day of June 1908

Nancy Howell
 Secretary of Internal Affairs.